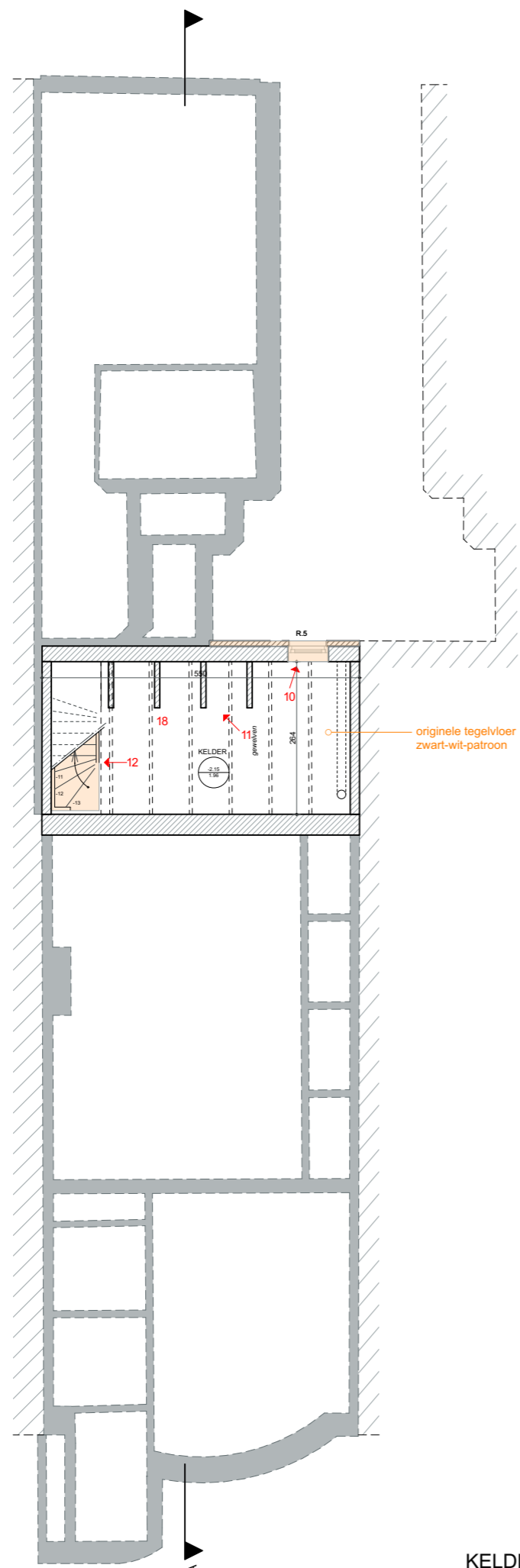


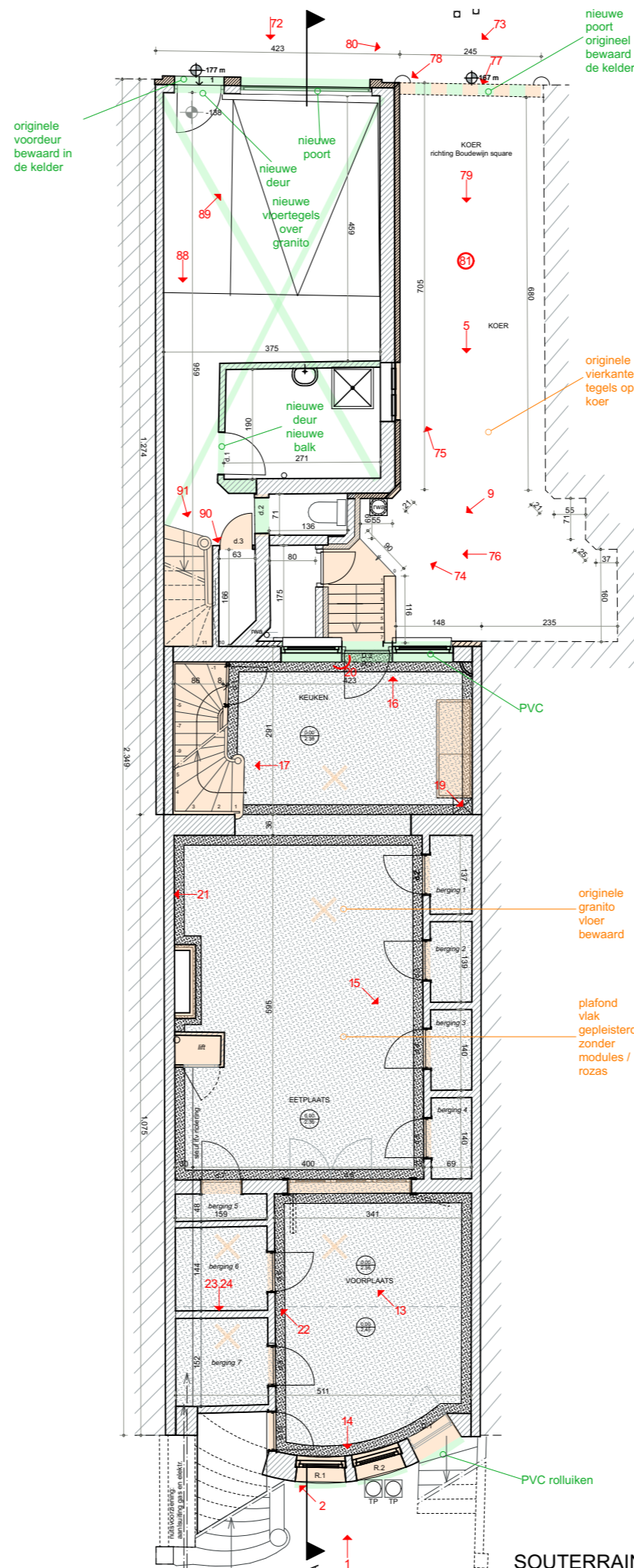
VILLA MALVINA

BIJLAGE AAN BEHEERSPLAN

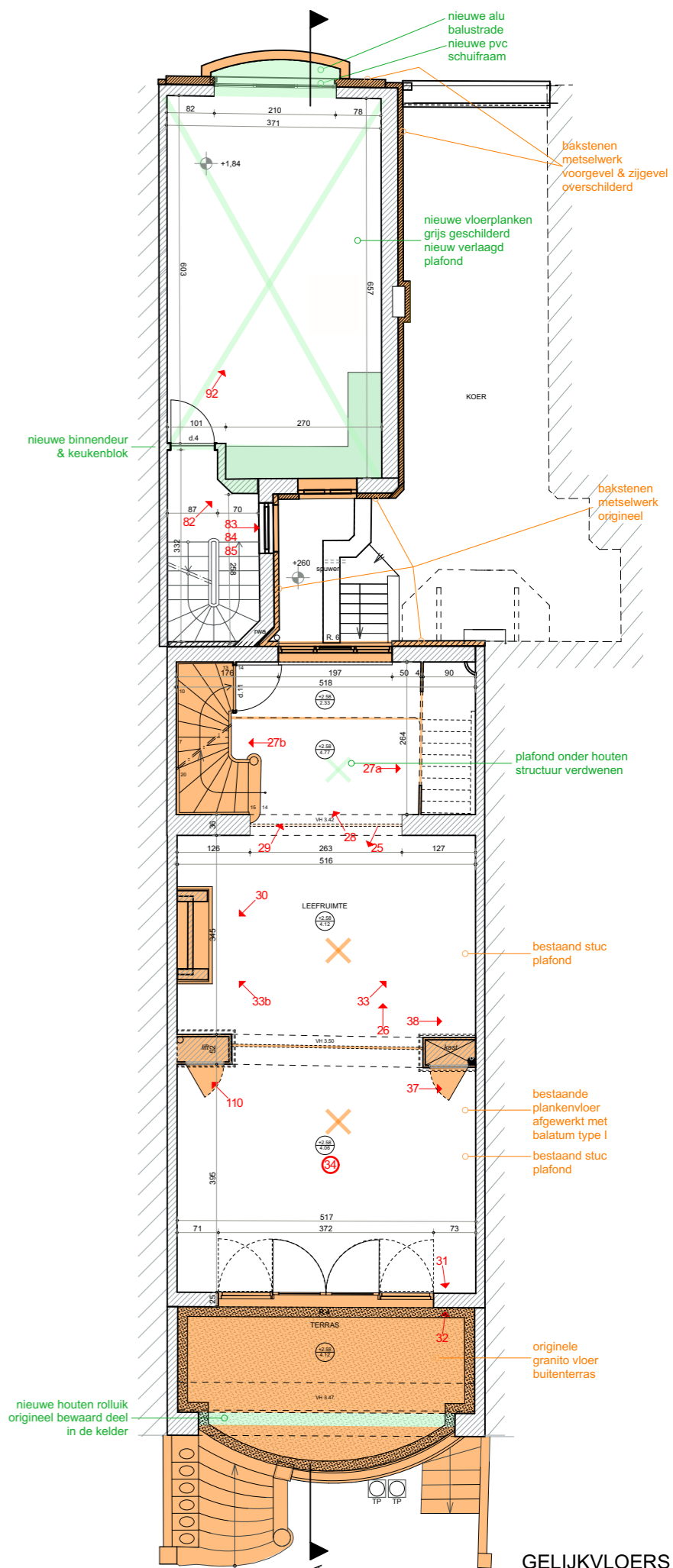
plannen bestaande toestand met aanduiding foto's / inventarisatie



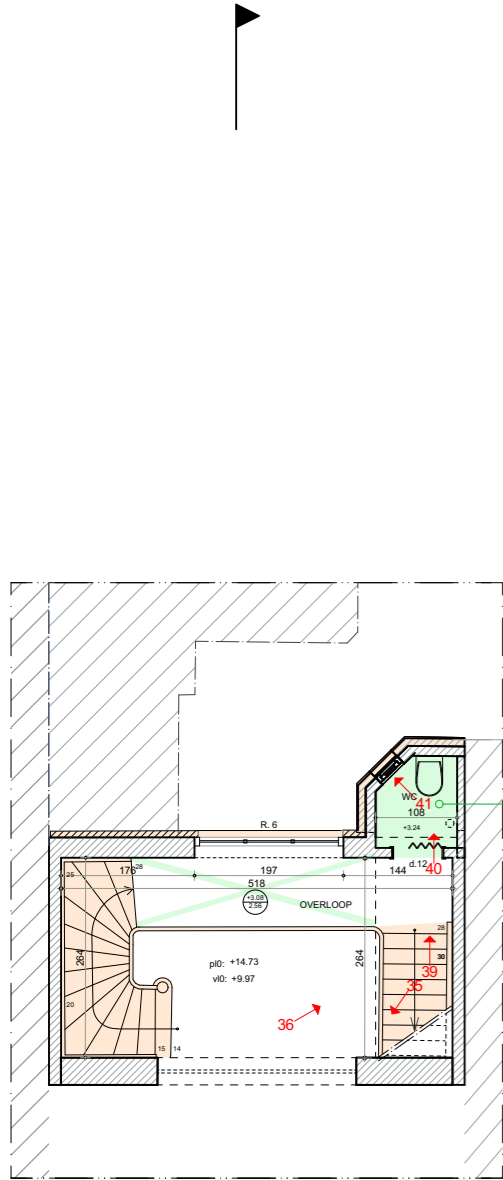
KELDER



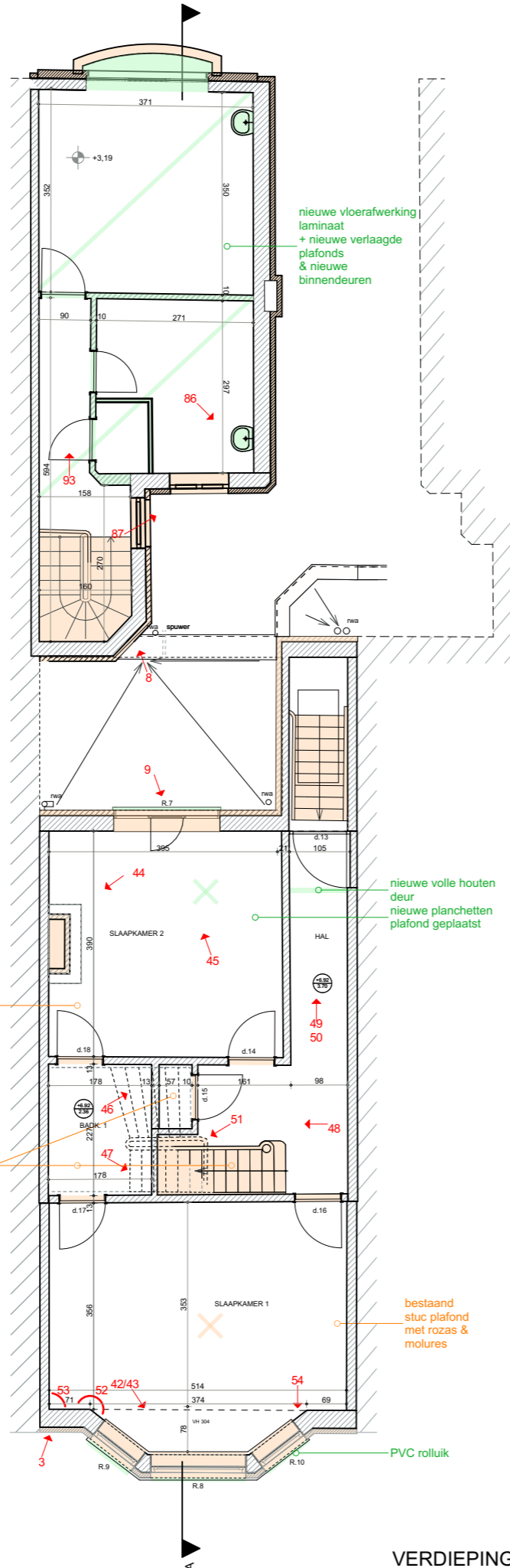
SOUTERRAIN -1



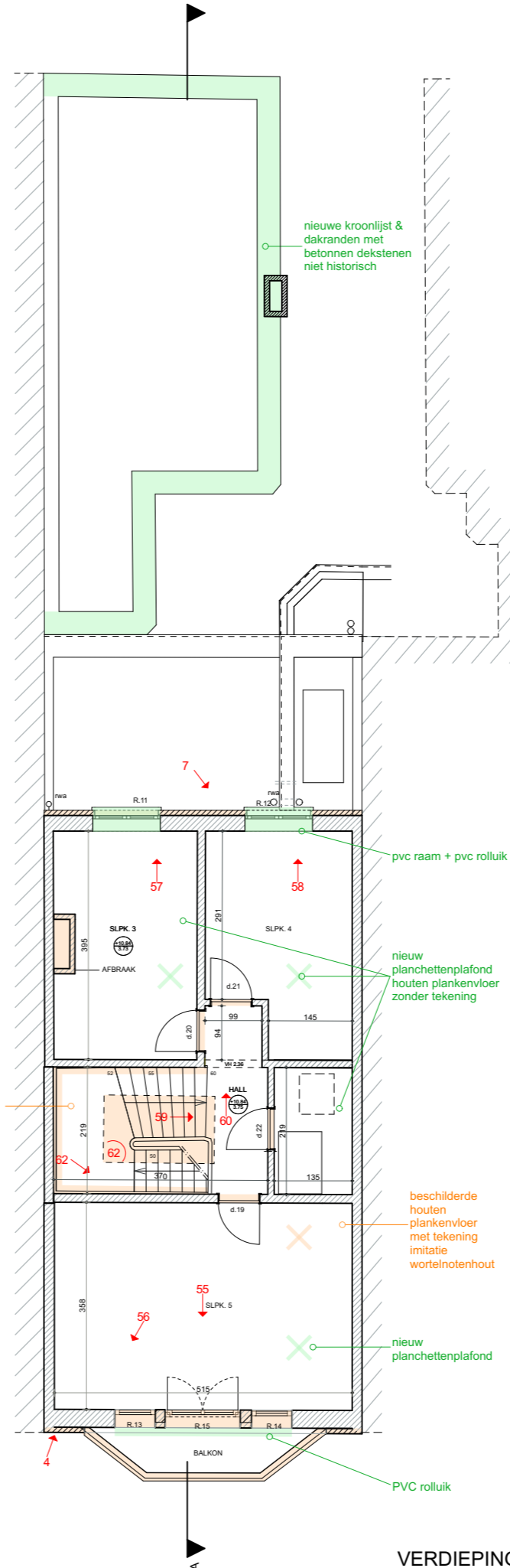
GELIJKVLOERS



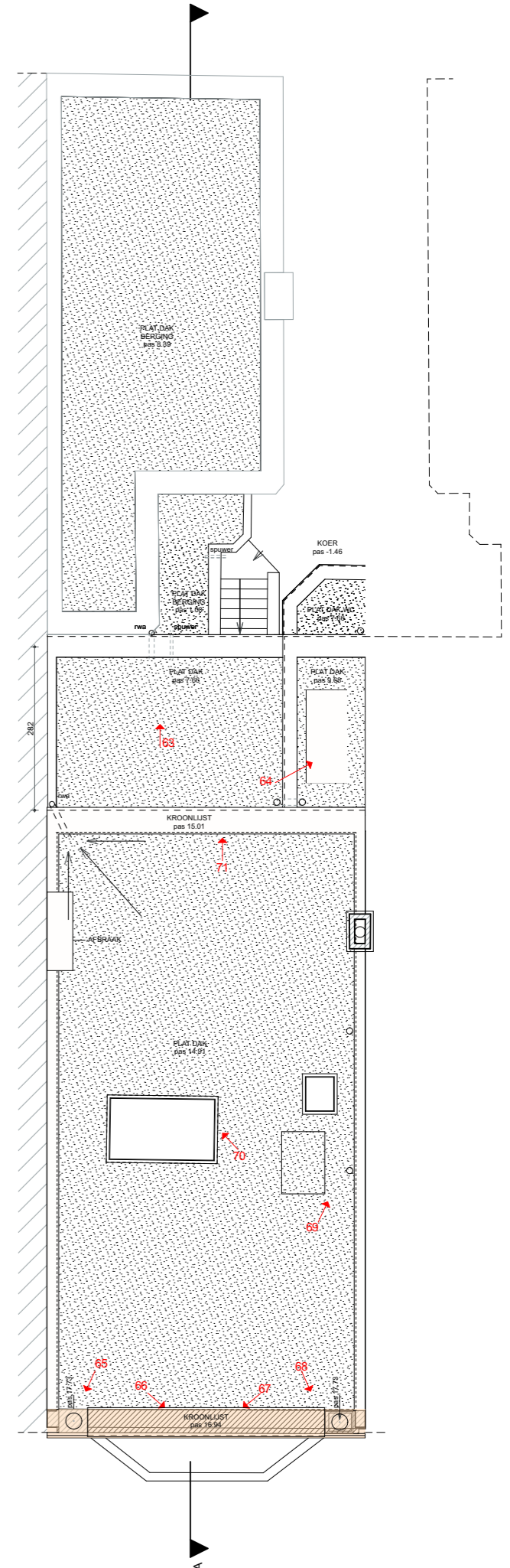
TUSSENVDP.



VERDIEPING +1

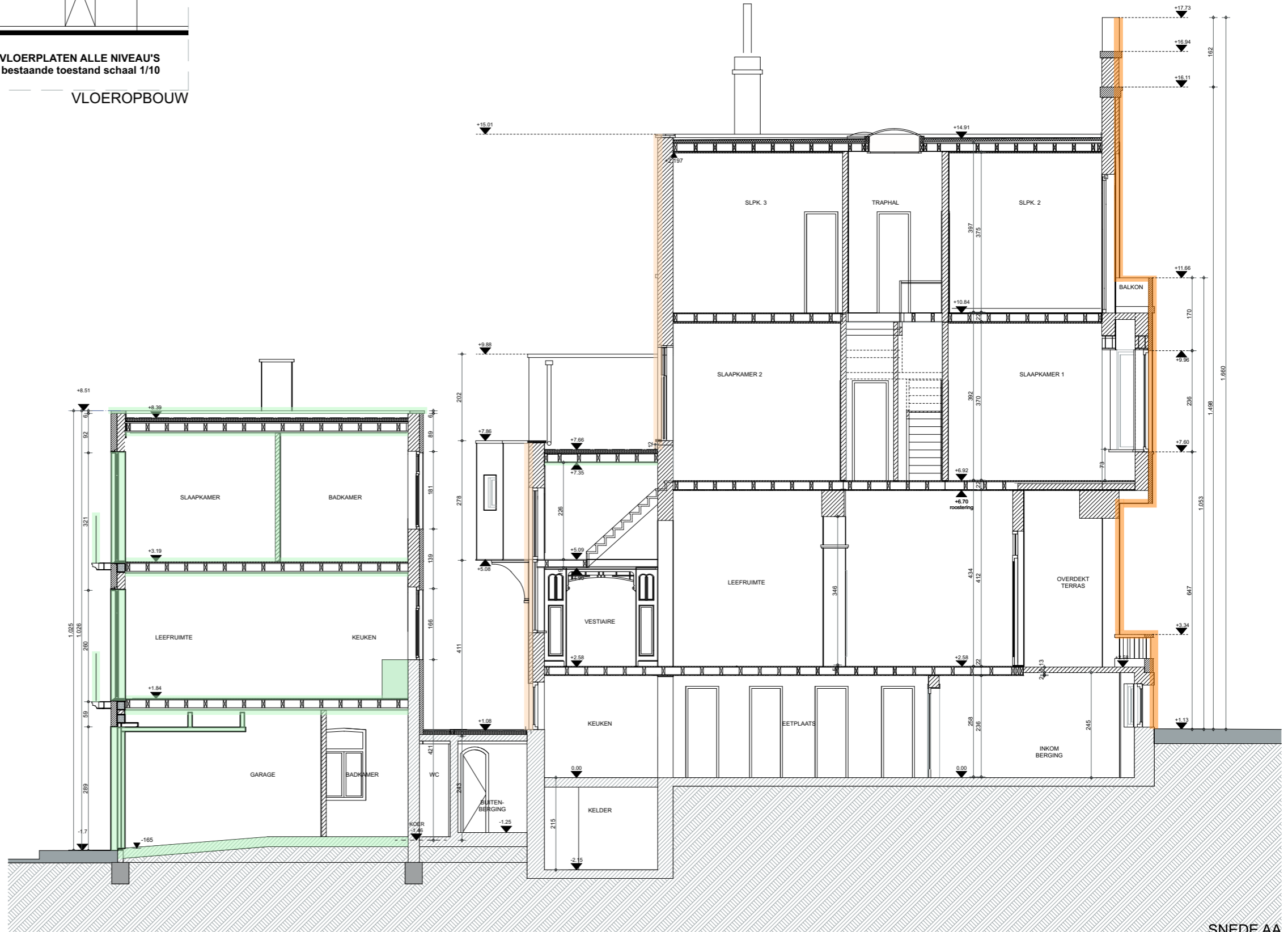
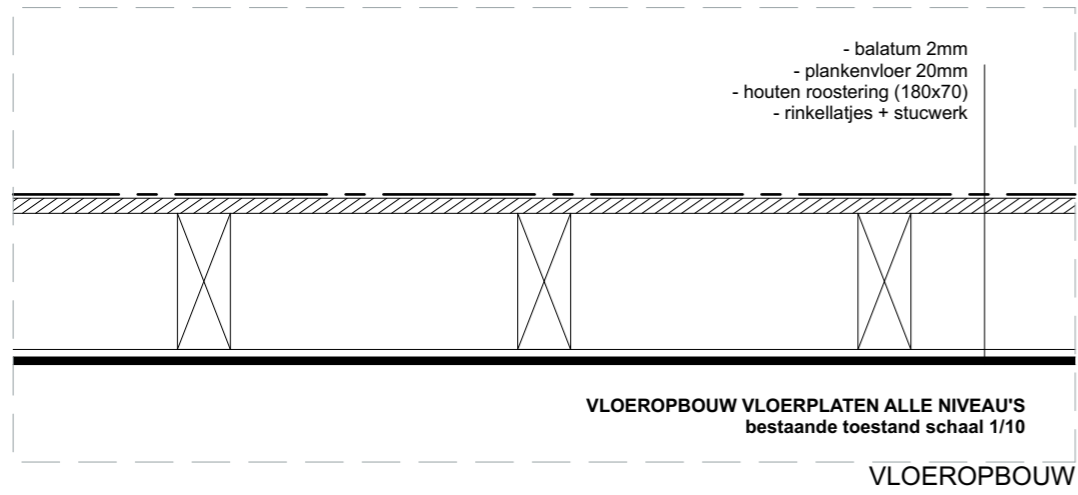


VERDIEPING +2



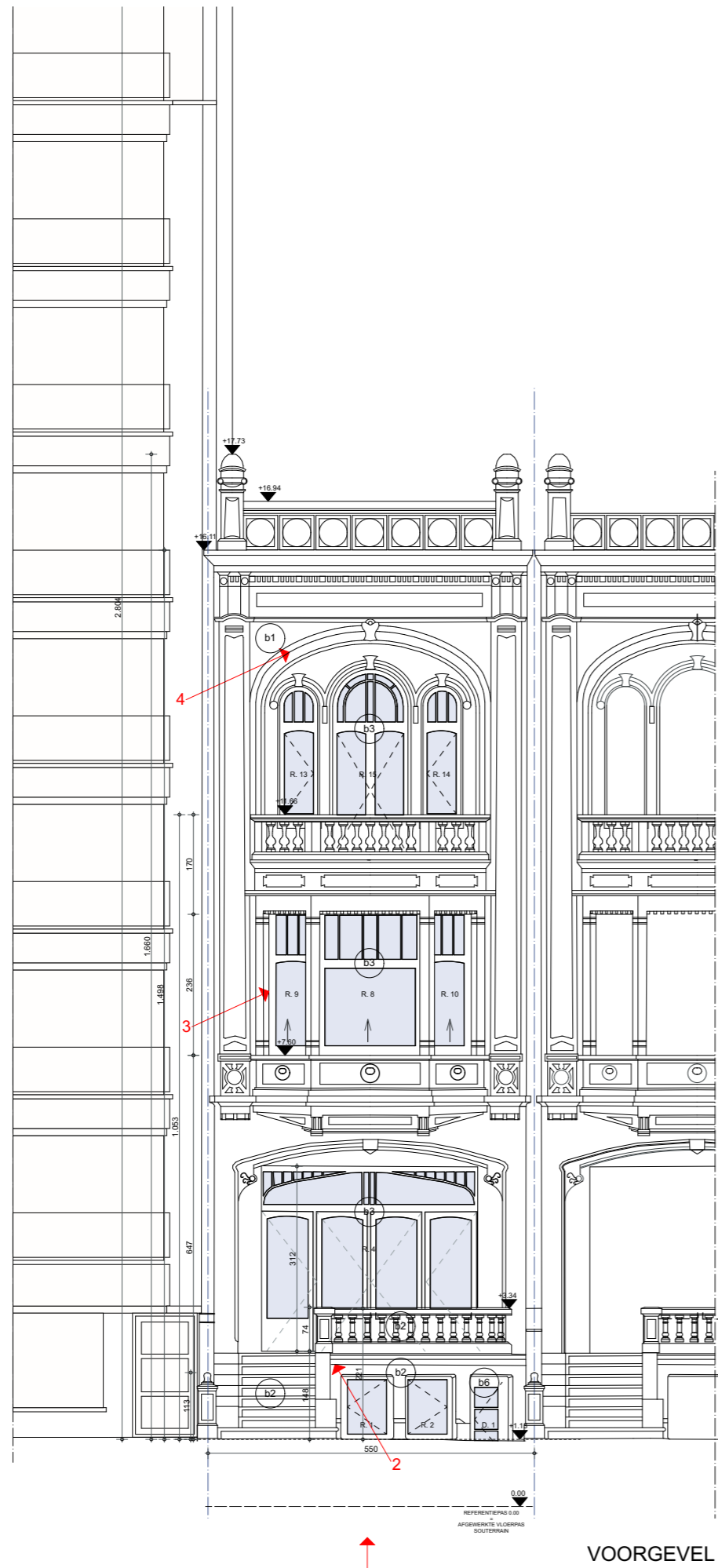
DAK

- meest historisch waardevolle ruimte
- aanduiding erfgoedelementen
- nieuwe ingrepen zonder historische waarde

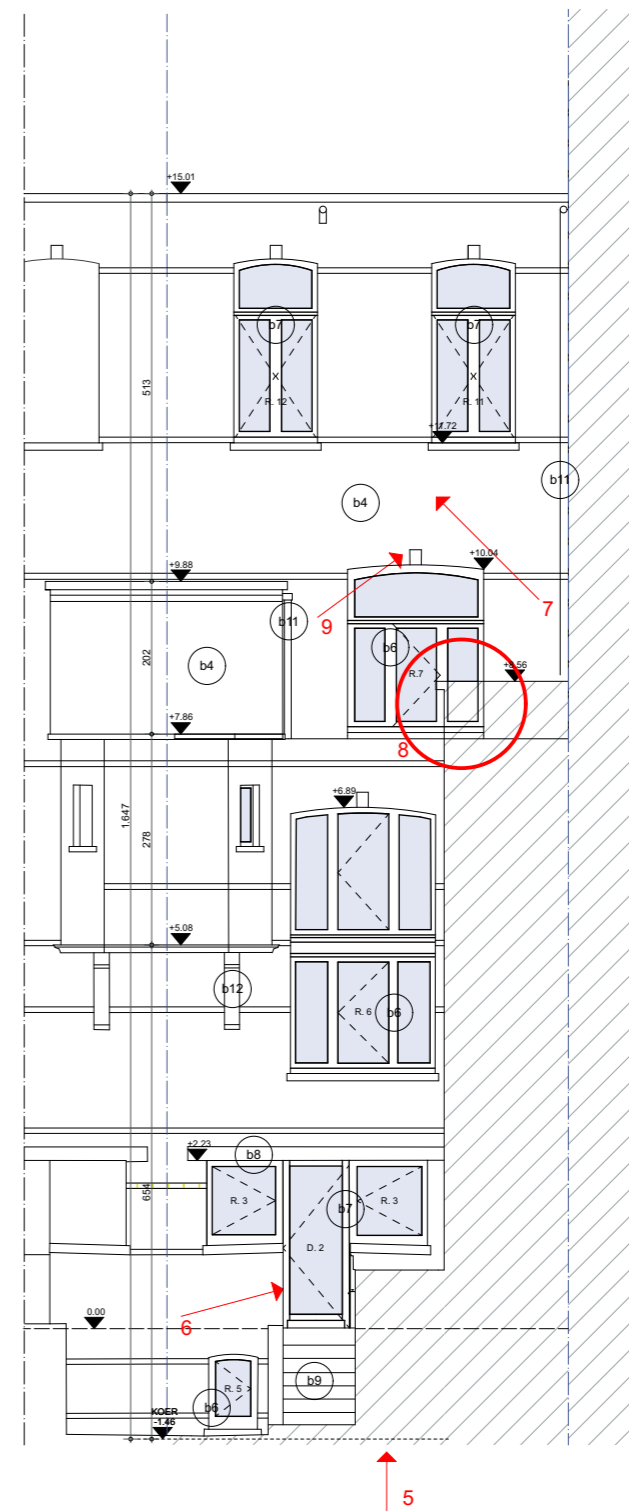


-  meest historisch waardevolle ruimte
-  aanduiding erfgoedelementen
-  nieuwe ingrepen zonder historische waarde

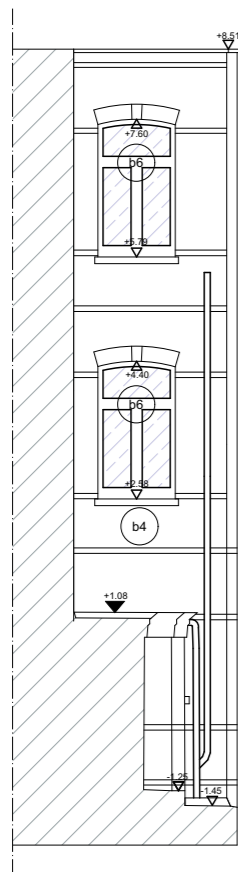
SNEDE AA



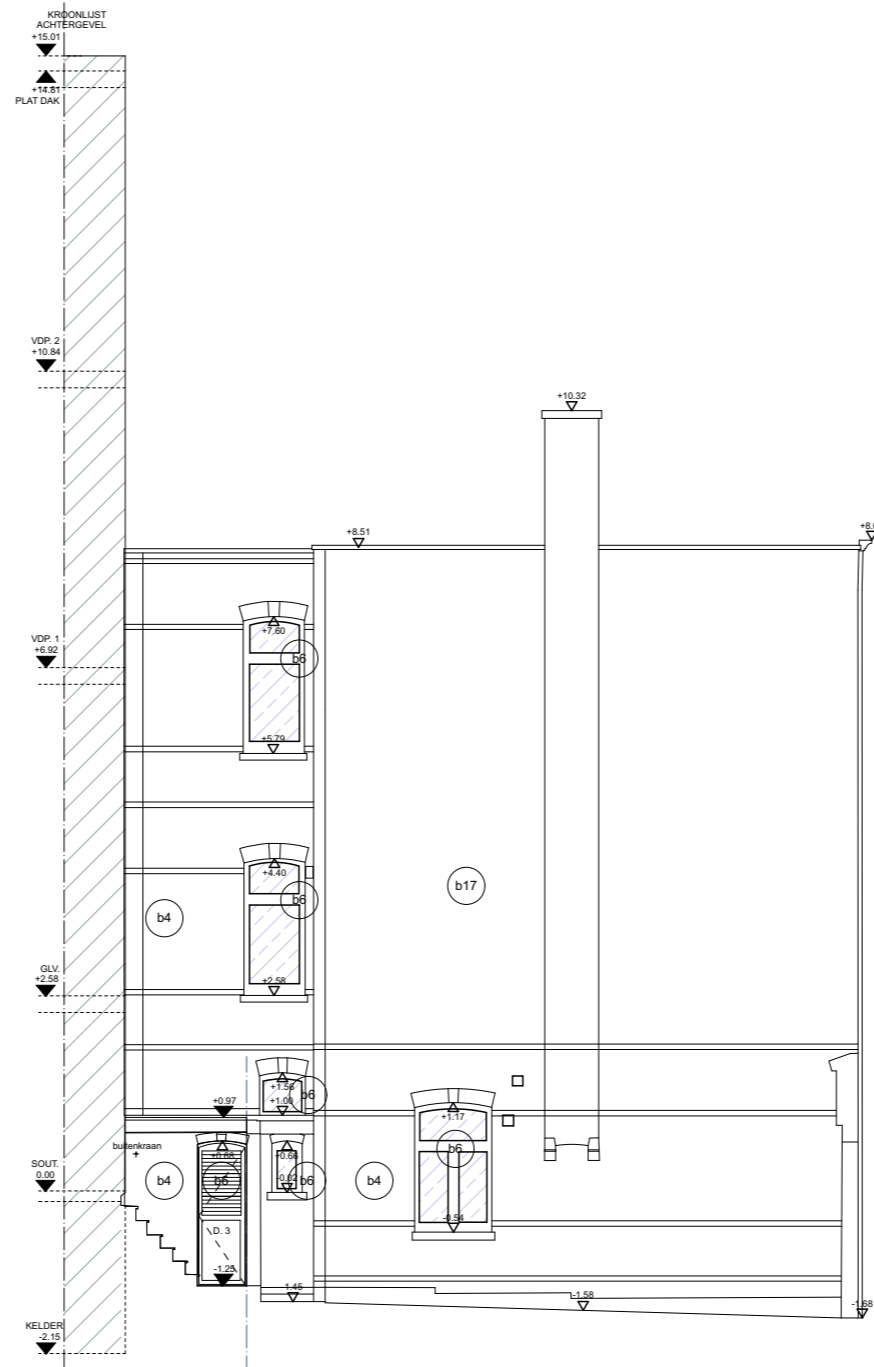
VOORGEVEL



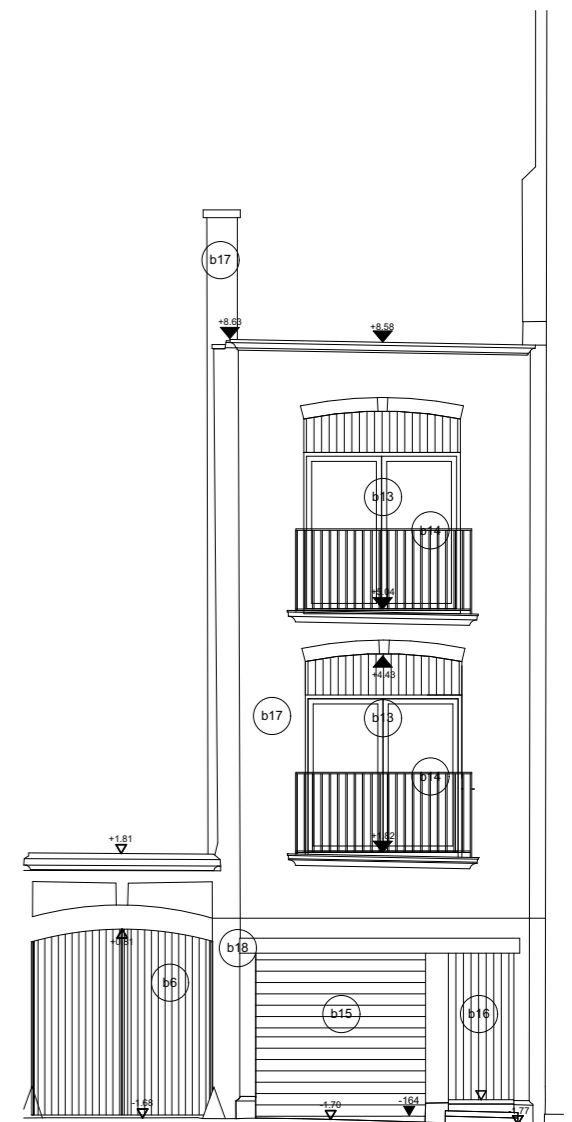
ACHTERGEVEL



ACHTERGEVEL
ACHTERHUIS



ZIJGEVEL
ACHTERHUIS



VOERGEVEL
ACHTERHUIS